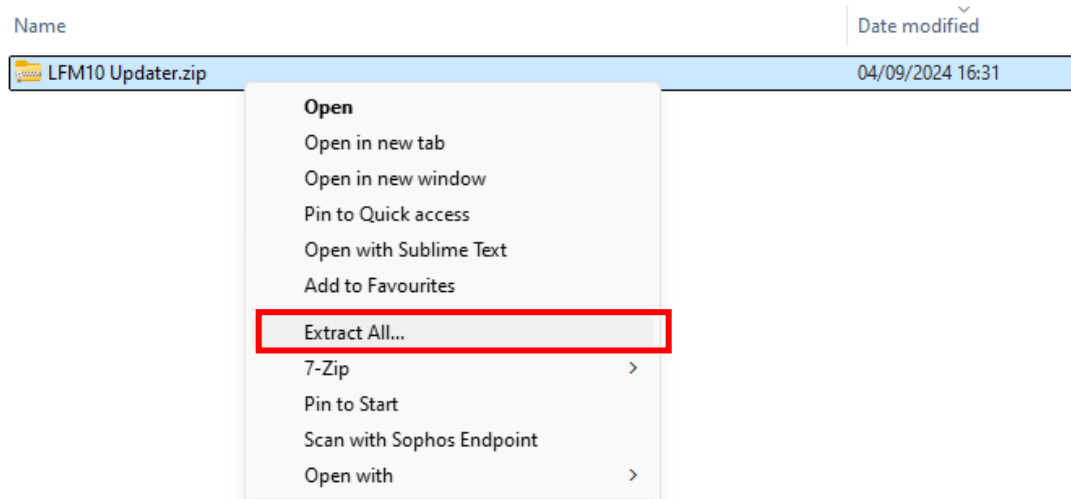
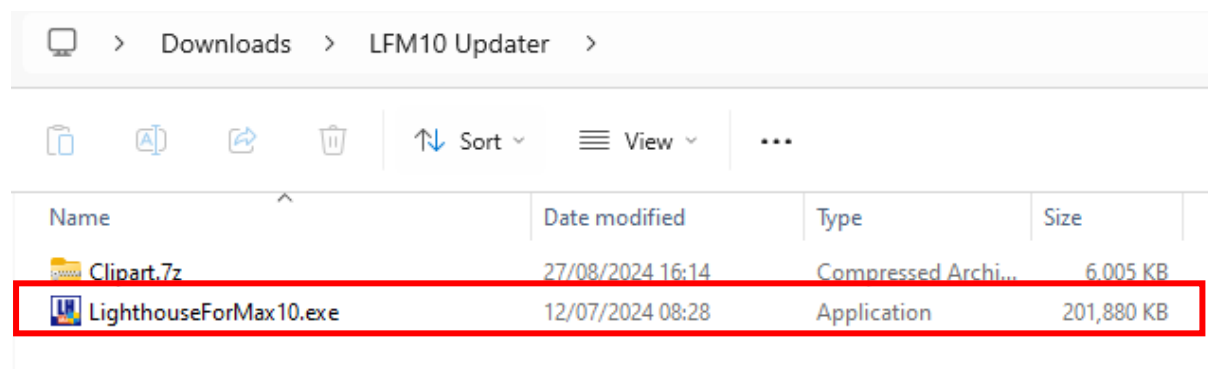


Updating Lighthouse for MAX 10

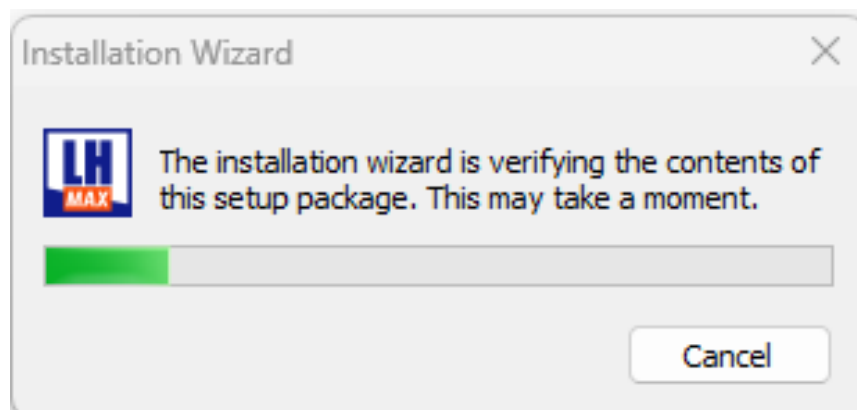
Download the software update package from our website. Once downloaded you will need to extract the zip file into a proper folder. To do this locate the zip file (normally in your downloads folder) and right click and choose extract all.



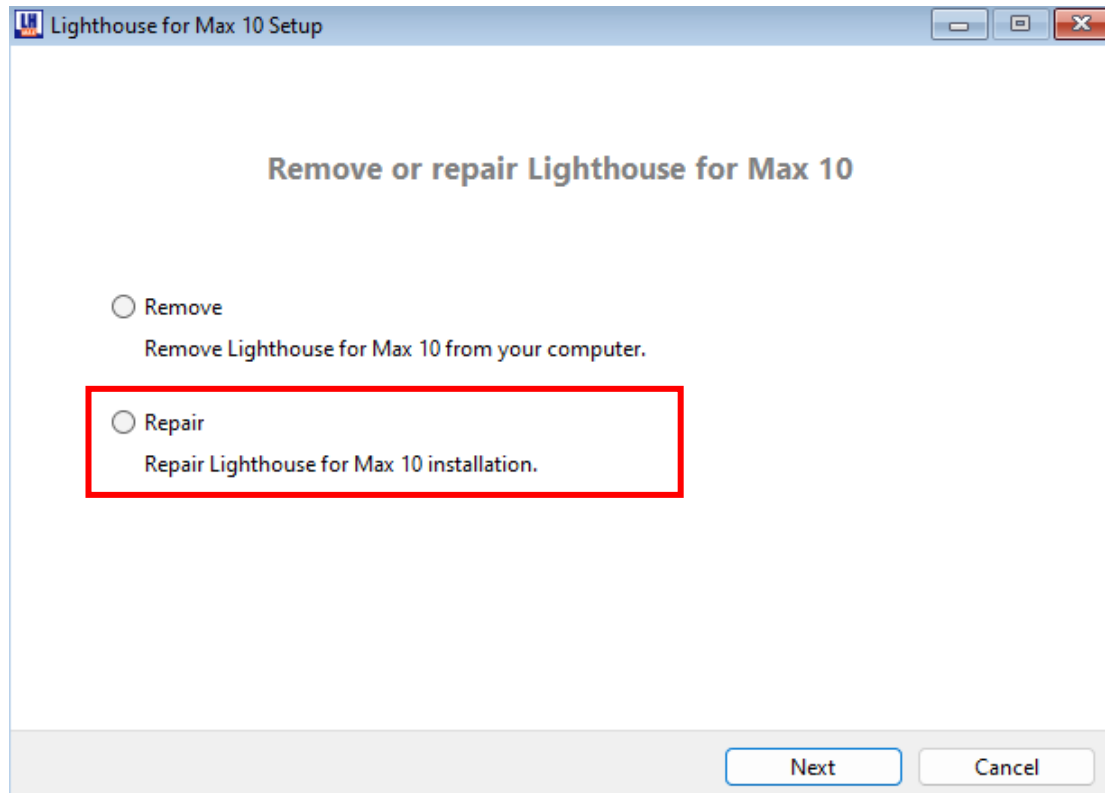
Once complete, open the newly created folder and any subfolders then run *LighthouseForMax10.exe*.



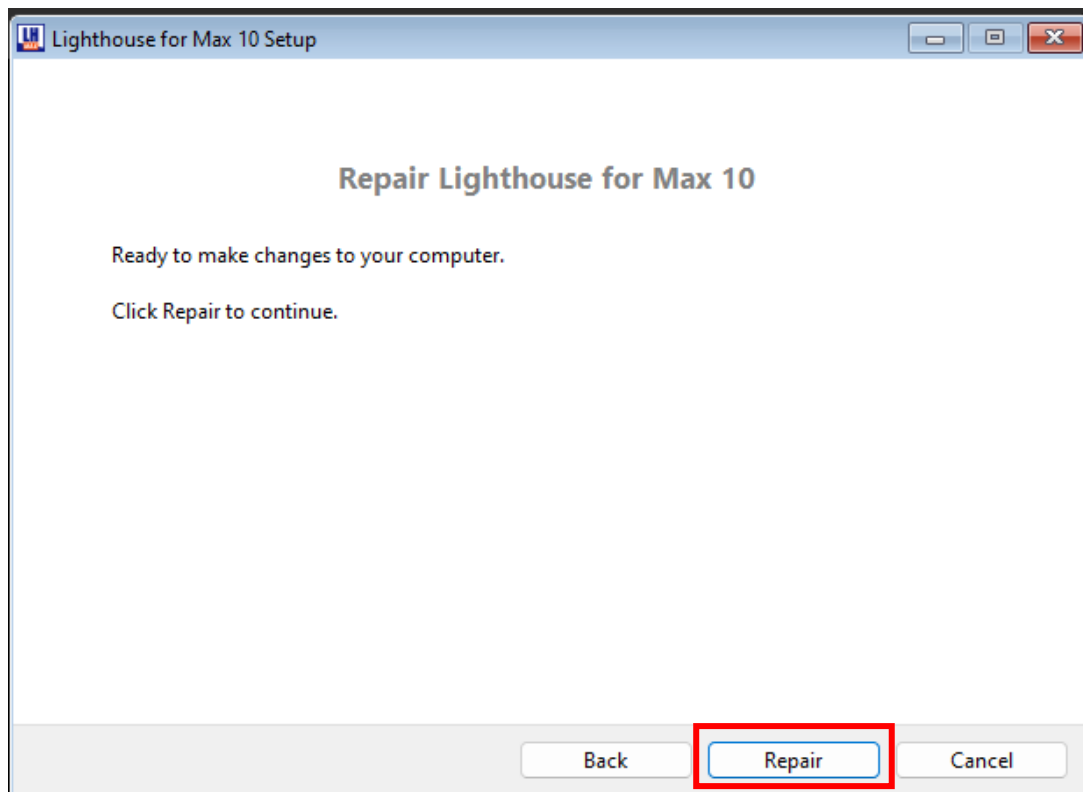
The installation wizard will then appear and start to verify the download package. Allow this to complete.



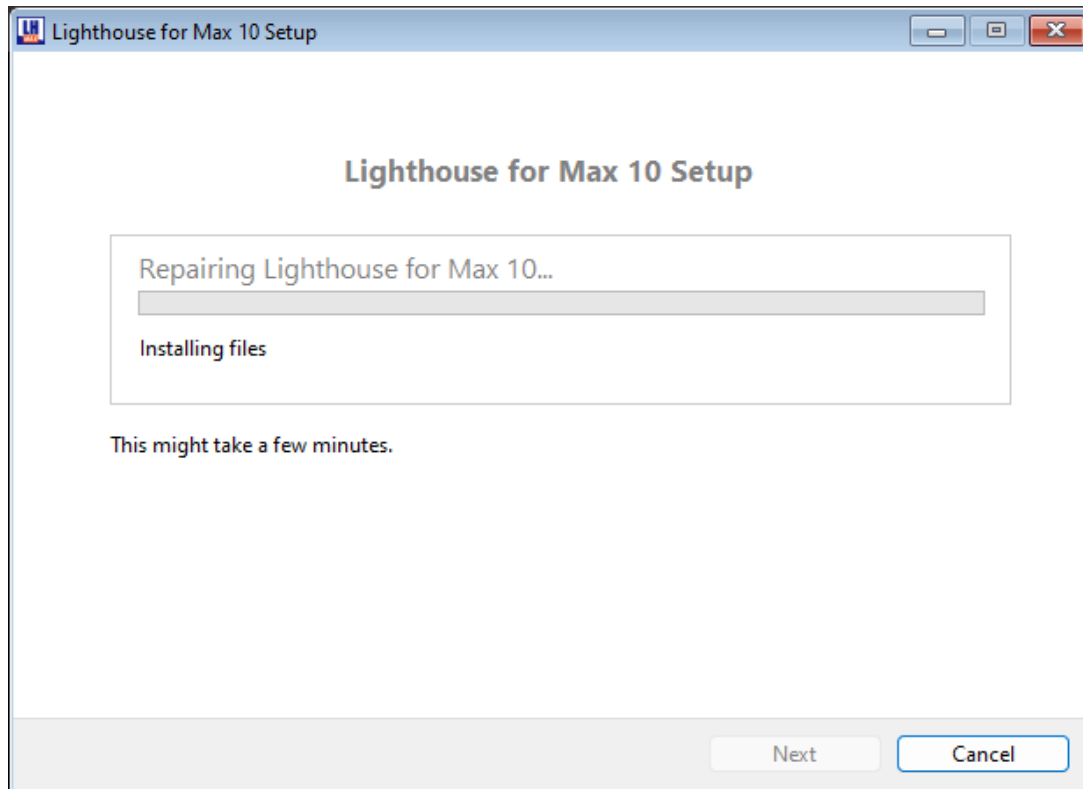
Choose to *Repair* the Lighthouse for MAX 10 installation and select *Next*.



On this screen choose *Repair* again and the software will begin updating your software to include the changes we have made.



The installation will then begin and may take several minutes so allow this to complete.



Once it has completed the setup will inform you it is done so now choose *close* and the software will now be updated.

